

IBM Envizi

The rise of ESG
and sustainability,
and how software
can help



The rise of sustainability and ESG



Sustainability is a **global megatrend**

The world's largest corporations and governments are **accelerating** decarbonization commitments, amid increasing scrutiny of **ESG disclosure**



Stakeholder pressure is high and intensifying

Investors



\$53

trillion
investment in
ESG by 2025

Source: Bloomberg Intelligence

Consumers



80%

of consumers
indicate
sustainability
is important
to them

Source: IBM Institute for Business Value

Employees



64%

of millennials
consider a
company's social
and environmental
commitments when
deciding where
to work

Source: Cone Communications

Government



83%

Net zero targets
have been set by
governments who
represent 83%
of global
greenhouse
gas emissions

Source: Net Zero Tracker

Key business challenges



**ESG
disclosures**



**GHG calculation
and reporting**



**Achieving
decarbonization
targets**



**Driving
engagement
and action**

Common gaps across key disclosure areas

Utility billing data



Electricity



Gas



Fuels



Solar

Water



Water, waste water

Waste & recycling



Waste & recycling data types

Scope 1 Emissions



On-site fuels

Scope 2 Emissions



RECs, green power, market-based emissions

Scope 3 Supply Chain Emissions



Across 15 Scope 3 categories

Social indicators



Community investment, donations, volunteer hours

Governance indicators



Headcount, rooms, beds, meals, sales

Targets



Across all indicators

Reporting frameworks and guidelines



RE 100



TCFD



NATIONAL
GREENHOUSE AND
ENERGY REPORTING

SUSTAINABLE
DEVELOPMENT
GOALS



INREV



Department for
Business, Energy
& Industrial Strategy

STREAMLINED ENERGY &
CARBON REPORTING

Introducing Envizi, *an IBM Company*



Accelerate sustainability initiatives
and achieve environmental goals with ...

envizi

*The world's most comprehensive data, analytics
and insights platform for Sustainability and ESG*

14 yrs.

time in market

150+

total clients⁽²⁾

150

countries reached

247k

locations
connected

Envizi harnesses the power of data,
analytics and insights to transition
to a low carbon future



Envizi value proposition

Envizi simplifies the capture, consolidation, management and analysis of sustainability data.

Envizi supports:



Financial grade carbon accounting



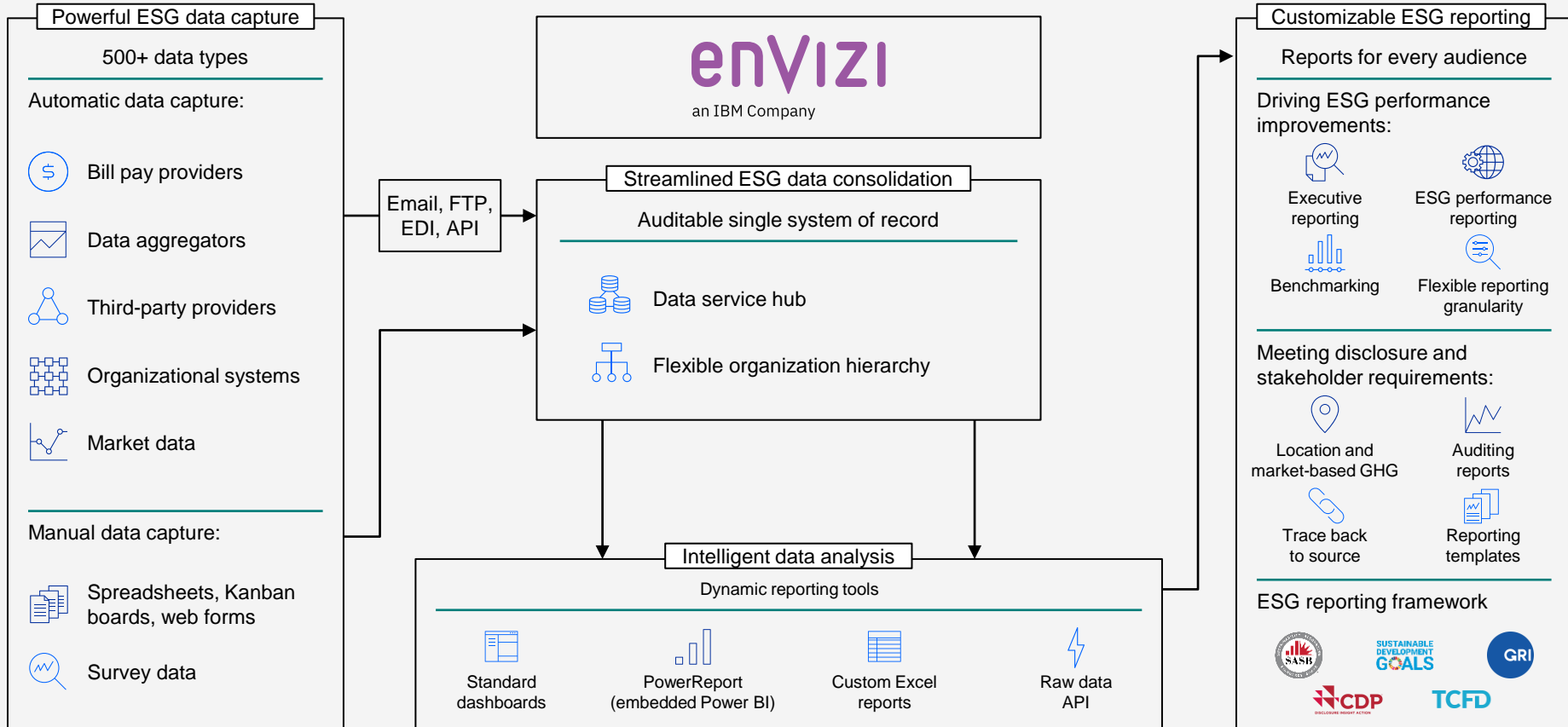
Comprehensive ESG reporting & disclosure



Tracking of performance to sustainability commitments and goals



Envizi consolidates sustainability data from providers



How Envizi helps address key pain points

Build ↪ Data foundation



A single system of record that delivers auditable, financial grade sustainability data

Streamline ↪ Reporting & disclosure



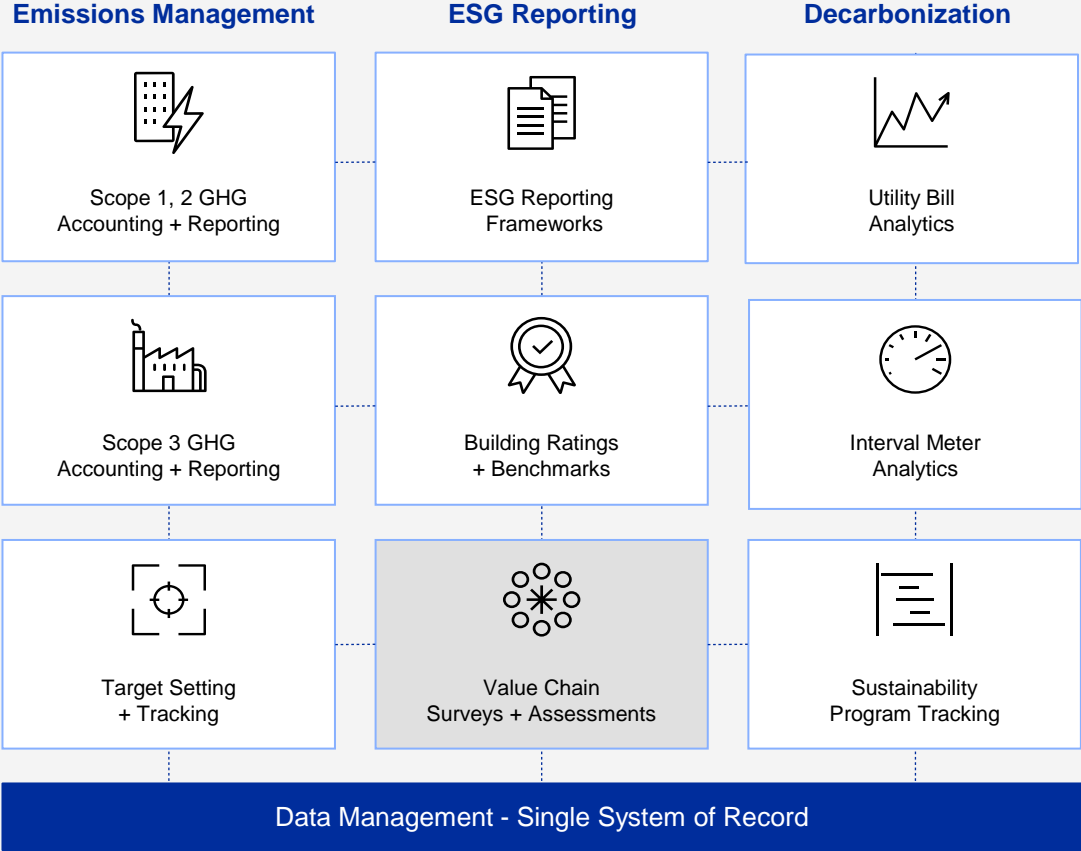
Flexible reporting tools to meet internal and external requirements

Accelerate ↪ Decarbonization



Unlock insights to inform the fastest and most cost-effective pathway to low carbon goal

Modular and comprehensive solution



greyed out modules are not currently covered in the upcoming module deep dives

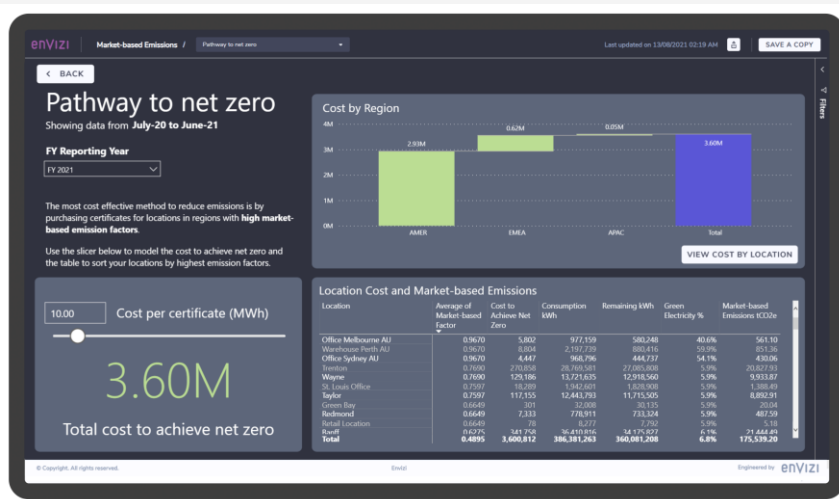
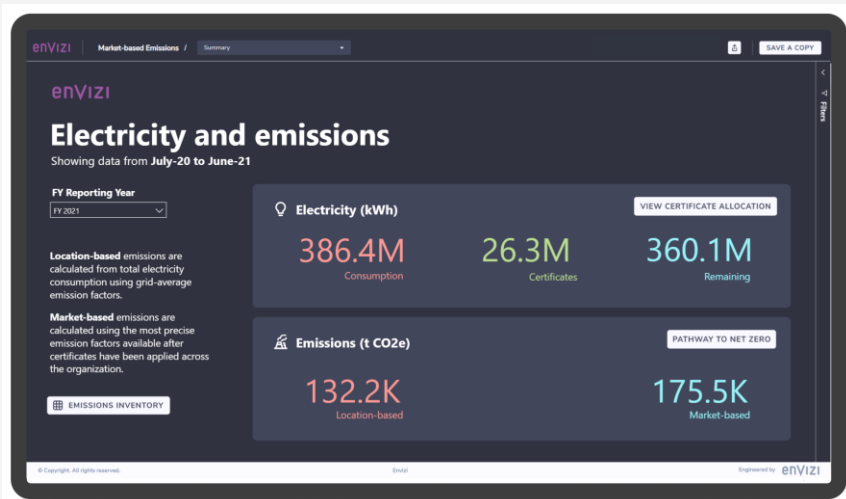
Scope 1 and Scope 2 GHG Reporting and Accounting



Take emissions calculations out of spreadsheets with an extensive platform built on the GHG Protocol, enabling clients to prepare Scope 1 and Scope 2 data for compliance or voluntary emissions reporting frameworks.

Benefits:

- Reduce reporting time by using templates, tools and data automation
- Satisfy auditors with finance grade data management
- Achieve global coverage with multi-country, multi-currency and multi-metric conversion
- Leverage Envizi's modeling tools to optimize emissions reductions



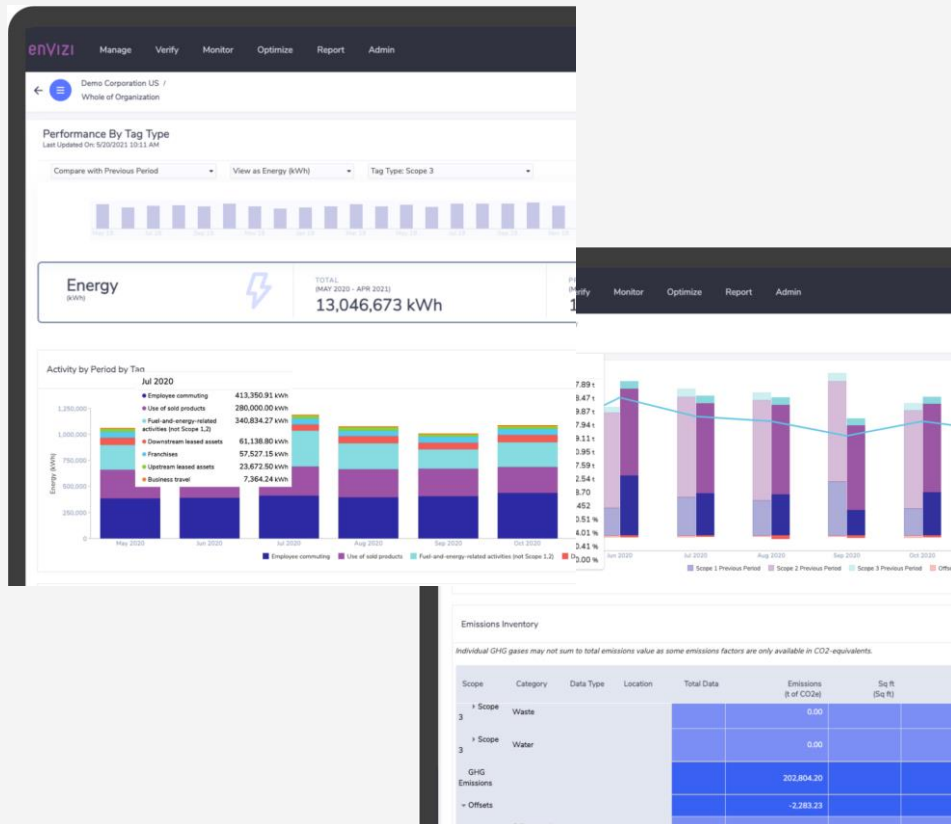
Scope 3 GHG Reporting and Accounting



Calculate Scope 3 upstream and downstream GHG emissions across an organization using all methods supported by the GHG Protocol including spend-based, average-data, hybrid and supplier-specific.

Benefits:

- Eliminate spreadsheets and simplify reporting
- Reduce the administrative burden having Envizi manage Scope 3 factors
- Satisfy auditors with finance grade data management and adherence to the GHG Protocol
- Achieve global coverage with multi-country, multi-currency and multi-metric conversion



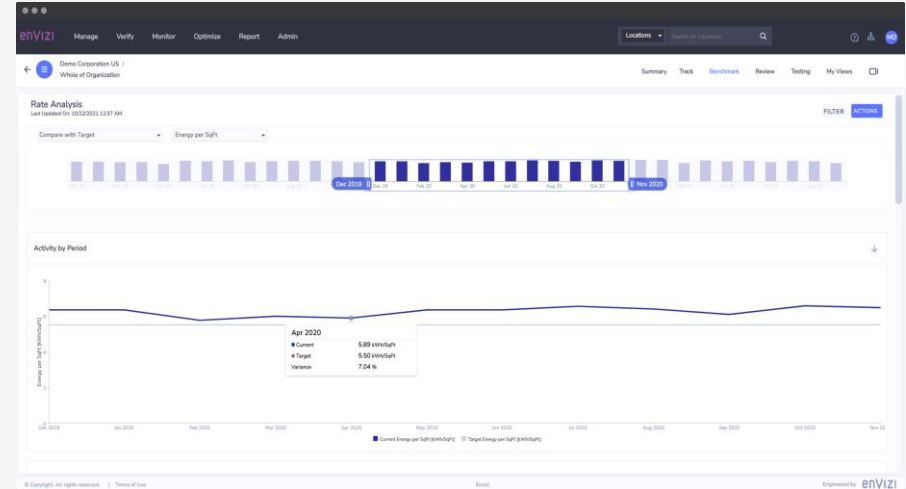
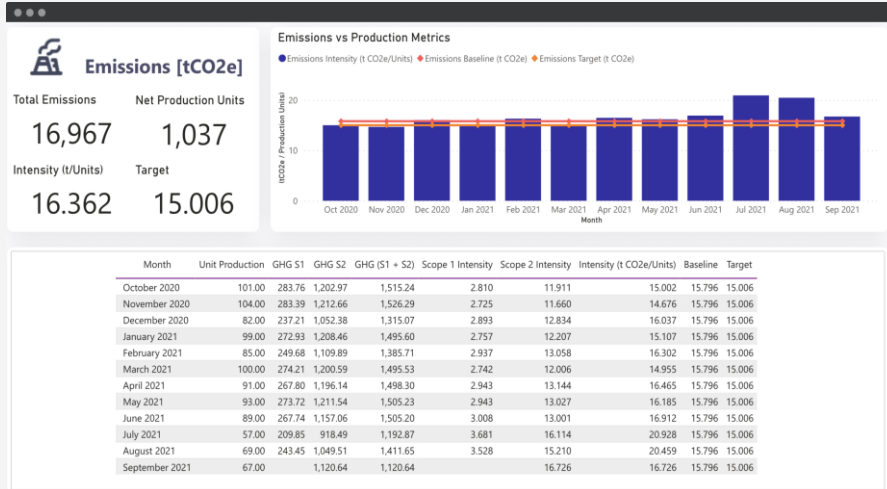
Target Setting and Tracking



Capture and track sustainability performance targets at any level of an organization with this comprehensive target setting and tracking tool.

Benefits:

- Track performance more accurately and access results when you need them
- Improve accountability for results at different levels of your organization
- Make more informed decisions
- Engage your people in sustainability performance



ESG Reporting Frameworks



Upgrade ESG data from spreadsheets into a robust platform which is finance-grade to meet reporting requirements.

Benefits:

- Report to multiple frameworks using a single system of record
- Reduce reporting time and costs by using templates, tools and data automation
- Satisfy auditors with finance grade data management
- Achieve global coverage with multi-country, multi-currency and multi-metric conversion

The screenshot shows the 'Framework Reporting Manager' interface. At the top, there's a navigation bar with 'enVIZI' and 'Framework Reporting Manager'. Below it, a 'BACK TO DISCLOSURES' link is visible. The main area is titled 'ENVIZI LIBRARY' and displays a grid of six reporting frameworks, each with a logo and a 'VIEW FRAMEWORK' button:

- TCFD**: Task Force on Climate-related Financial Disclosures. 4 Topics • 11 Questions. Description: Financial markets need clear, comprehensive, high-quality information on the impacts of climate change. This includes the risks and opportunities presented by rising temperatures, climate-related policy, and emerging technologies in our changing world. The Financial Stability Board created the Task Force on Climate-related Financial Disclosures in 2015. In 2017, the TCFD published its final recommendations. The TCFD is a leading international body of experts on climate-related financial risks.
- SASB**: Sustainability Accounting Standards Board. 14 Topics • 36 Questions. Description: SASB Standards enable businesses around the world to identify, manage and communicate financially-material sustainability information to their investors. SASB has developed a complete set of 77 Industry Standards. In November 2018, SASB published these Standards, providing a complete set of globally applicable standards.
- GRI**: Global Reporting Initiative. 35 Topics • 162 Questions. Description: The GRI Standards enable any organization – large or small, private or public – to understand and report on their impacts on the economy, environment and people in a comparable and credible way, thereby increasing transparency on their contribution to sustainable development. In addition to reporting more...
- SFDR**: Sustainable Finance Disclosure Regulation.
- UN SDGs**: Sustainable Development Goals.
- INREV**: International Network of Investment Managers.

At the bottom left, it says 'All Content Copyright EnVizi Software Pty Limited 2022'. At the bottom right, it says 'Engineered by: @ENVIZI'.

The screenshot shows the 'Framework Reporting Manager' interface with a detailed view of a reporting framework. The top navigation bar includes 'enVIZI', 'Framework Reporting Manager', and a search bar. Below the navigation bar, there are filters for 'COPY FROM LAST YEAR', 'SEARCH RESPONSES', and 'IN PROGRESS'. The main content area is titled 'Supply chain regulatory compliance' and includes a 'Question' section with the text: 'Percentage of (1) Tier 1 supplier facilities and (2) supplier facilities beyond Tier 1 in compliance with wastewater discharge permits and/or contractual agreements'. Below this, there is a 'Details' section with a list of four points:

1. The entity shall disclose the percentage of (1) its Tier 1 supplier facilities and (2) its supplier facilities beyond Tier 1 in compliance with wastewater discharge permits and/or contractual agreements.
1. Tier 1 suppliers are defined as suppliers that transact directly with the entity, such as finished goods manufacturers (e.g., cut and sew facilities).
2. Suppliers beyond Tier 1 are the key suppliers to the entity's Tier 1 suppliers and can include manufacturers, processing plants, and providers of raw materials extraction (e.g., mills, dye houses and washing facilities, sundry manufacturers, tanneries, embroiderers, screen printers, farms, and/or slaughter houses).
3. A supplier facility shall be considered to be in compliance with applicable permits and/or contractual agreements if it meets the limits established by local legal or regulatory requirements for each chemical during testing conducted by local officials and by the entity, and if the facility has not received a wastewater discharge violation during the reporting period.
 1. The determination of facility compliance with permits and/or contractual agreements is aligned with the Sustainable Apparel Coalition's (SAC) Higg Facility Environment Module (FEM), Section 4 - Wastewater/Effluent, Level 1, Question 2.
4. The entity shall calculate the percentages by dividing the number of supplier facilities (in each respective category) in compliance

On the right side, there is a 'Details' panel with a dropdown menu for 'COPY TO RESPONSE' and 'VIEW DETAILS'. The dropdown menu is open, showing options: 'Methodology', 'Final Response', 'Links', and 'Attachments'. Below the dropdown, the 'Details' panel shows: 'EnVizi Category: Supply Chain Management', 'Assignee: Joseph Magee-Billson', 'Reviewer: Misha Romanov', and 'Last Activity: 2:04 PM, 24-Dec-2021'. At the bottom left, it says 'All Content Copyright EnVizi Software Pty Limited 2022'. At the bottom right, it says 'Engineered by: @ENVIZI'.



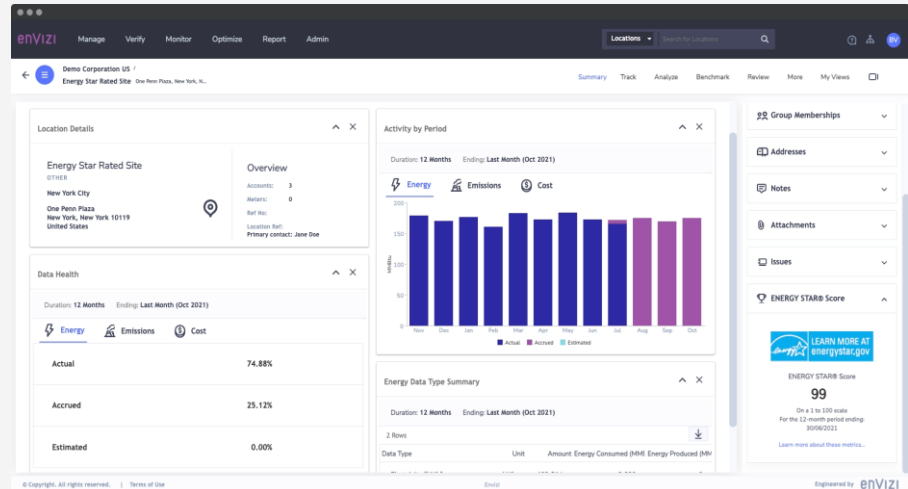
Building Ratings and Benchmarks

Capture building attribute and utility data, calculate ratings, and benchmark and track building performance in one place.

Benefits:

- Reduce accreditation costs and compliance risks by storing and reporting utility consumption and building attribute data in a central location
- Reduce rating shock by tracking indicative ratings performance against targets on a monthly basis
- Save time by pushing data directly to frameworks in supported formats

Location	Asset Characteristics	Efficiency Measures	Building Certifications	Reporting Characteristics	Energy	GHG	Water	Waste	Date	Divested	Status
Aberfoyle Head Office	100	100		100	100	100	100	100	92	0	API Connection Active
Ashdale Grogar Street	100	0		0	93	90	100	0	51	0	API Connection Active
Cassville NT	100	0		67	0	50	0	100	58	0	API Connection Active
Chutwood Albert Street	100	100	0	100	100	100	100	100	76	124	API Connection Active
CLP Asset Head Office	100	0		0	17	0	33	0	36	0	API Connection Active
East Creek Shopping Centre	100	100		100	100	100	100	100	92	0	API Connection Active
Empty location	100	100		0	0	0	0	0	54	0	API Connection Active
Fleet Fuel Site	100	0		0	0	0	0	0	31	0	API Connection Active
Melbourne Bourke & Elizabeth Street	100	0		0	0	0	0	0	31	0	API Connection Active
Melbourne Bourke Street	100	0		0	100	0	0	0	42	62	API Connection Active
NPI Site	100	0		0	0	0	0	0	37	0	API Connection Active



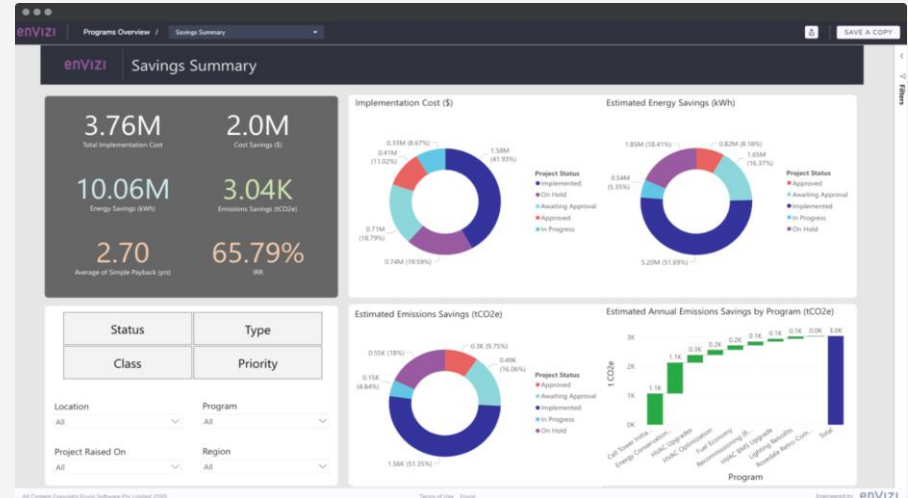
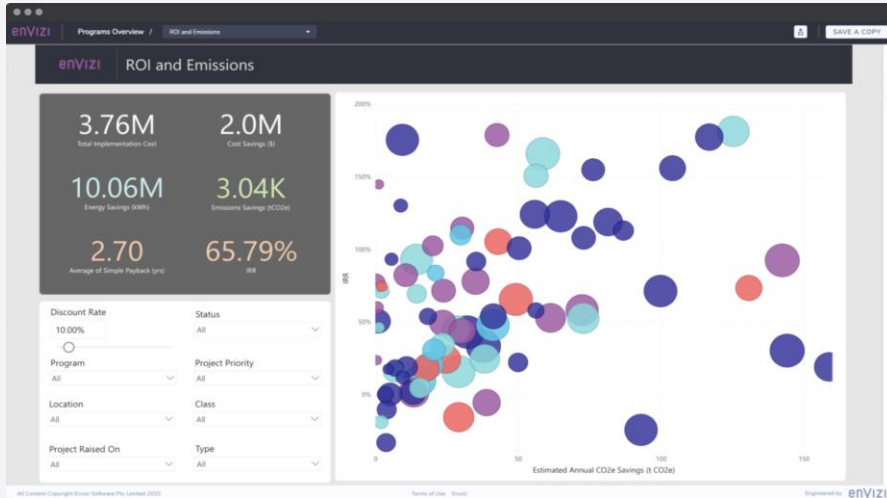
Sustainability Program Tracking



Manage an organization's sustainability programs in a consistent and transparent manner to track progress, verify results and optimize investment decisions.

Benefits:

- Achieve a unified system of record and eliminate numerous systems and spreadsheets
- Improve project transparency for all stakeholders across the organization
- Enhance accountability by validating actual results against business case assumptions
- Make smarter investment decisions based on real-world project performance



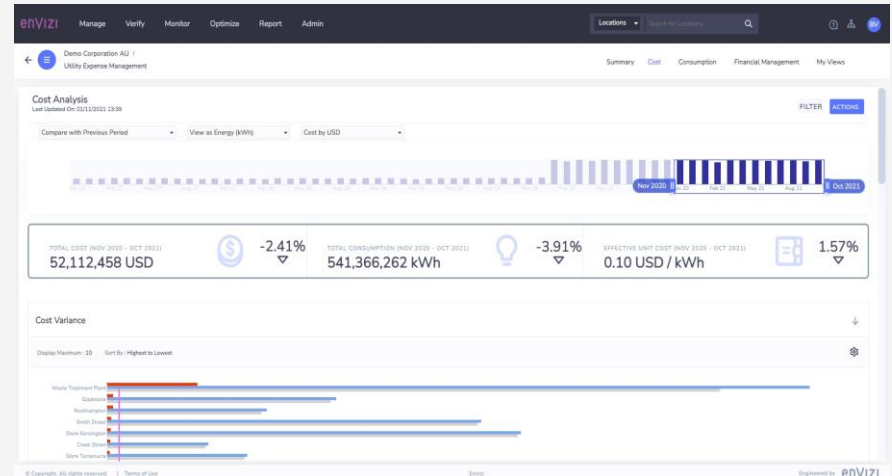
Utility Bill Analytics



Leverage utility billing data inside a powerful analytics engine to analyze and control energy cost and consumption, identify anomalies, and inform decision making for energy efficiency.

Benefits:

- Streamline the capture and reporting of utility data across the organization
- Reduce errors from manual data handling
- Quickly respond to cost and consumption variances to minimize waste
- Identify more savings opportunities through intensity benchmarking
- Measure savings realized over time to drive accountability and transparency



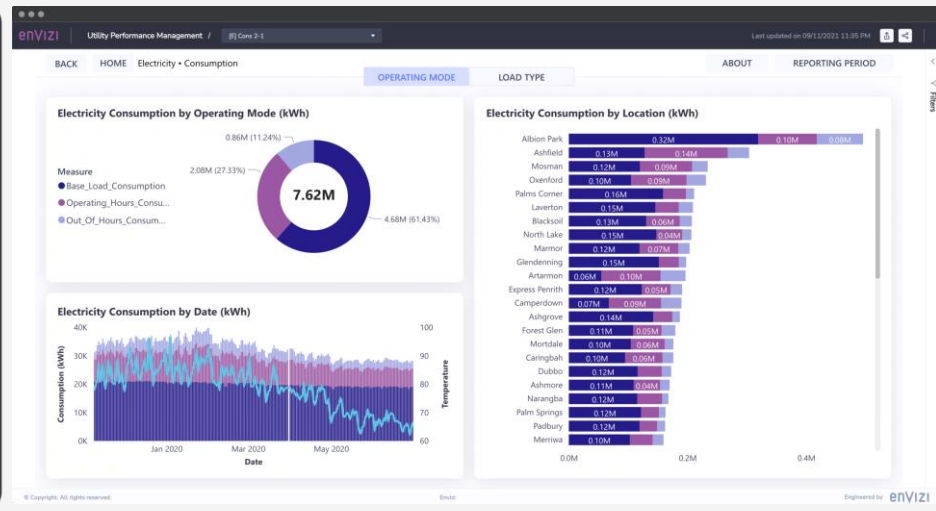
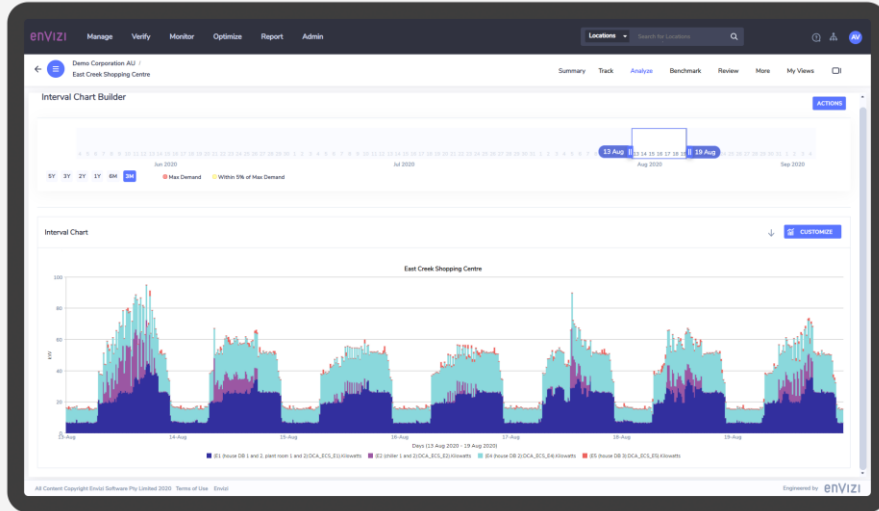
Interval Meter Analytics



Automate the capture of high-resolution meter data and leverage sophisticated analytics and workflow tools, so your organization can drive efficiency and decarbonize across facilities.

Benefits:

- Improve operational transparency and accountability
- Minimize energy waste
- Identify more savings opportunities
- Drive higher efficiency and accelerate decarbonization



500+ sustainability and energy data types

Utility billing data



Electricity Gas Water

Transport and stationary fuels



Diesel, petrol, LPG, propane aircraft fuel, LNG, bio-fuel

Refrigerants & fugitive gases



100+ gas types

Electricity produced



Solar, wind, bio-gas, hydro, thermal

Meter data



NMI meters, smart meters, sub-meters

Certificates & offsets



RECs, carbon effects

Waste & recycling



300+ waste & recycling data types

Materials



100+ material types, construction and building

Transportation



Air travel, taxi, train, car

BMS and IoT data



Control signals, sensors

Social & environmental



Community investment, donations, volunteer hours

Company metrics



Headcount, rooms, beds, meals, sales

Production metrics



Unit, tonnes, \$, litres, hours

Building metrics



m2, FTEs, occupant hours, building ratings, visits

Weather data



HDD, CDD, rainfall, humidity, irradiation

Key differentiators



500+
data types
600+
connectors

Capture
data of all details
of efficiency
projects, manual
or automatic

Track
performance
outcomes by linking
projects to
utility accounts
and meters

Report
on performance
versus expected
outcomes at
a portfolio
or asset level



A world-class solution supporting major framework



STREAMLINED ENERGY & CARBON REPORTING



Client references



From manual data entry to ranking on an award-winning sustainability business publication



Celestica™



Client

A leader in design, manufacturing and supply chain solutions



Business challenge

Data management and accuracy and manual data entry methods



Solution

Implemented Envizi Sustainability Performance Management suite to compile and transform data

Next steps



Getting started with Envizi

**A turnkey
SaaS solution**



**Implementation
methodology**





**Implementation
timeline**

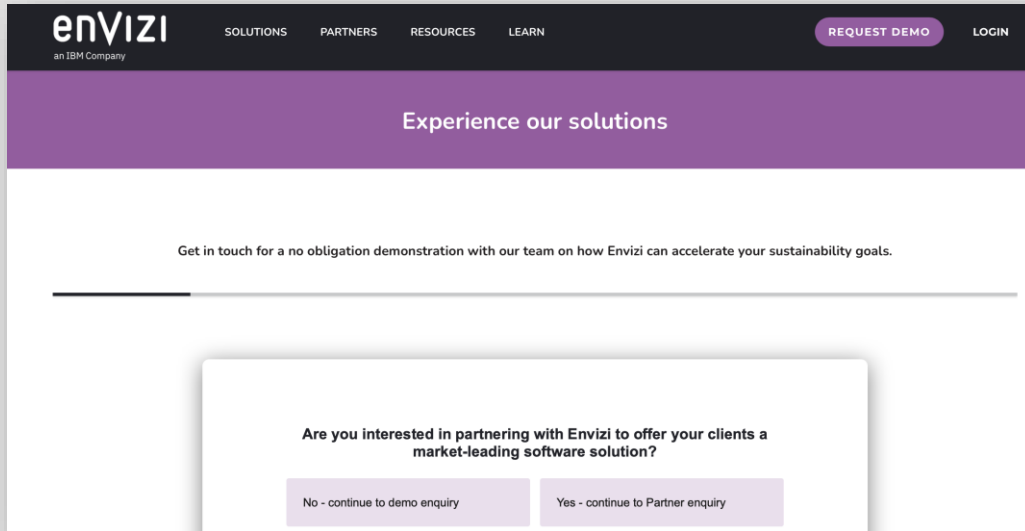


SUSTAINABILITY

Get engaged with Envizi

Address pain points and how sustainability performance management impacts your business – book a demo!

- Visit the [IBM Envizi Sustainability Performance Management](#) webpage and click [Request demo](#) .
- This will redirect to the Envizi webpage. Click 



IBM